

BRACKETS AND ADAPTERS FOR STAINLESS STEEL PRODUCTS

NXWBS1 WALL MOUNT BRACKET

Bracket for NTC, NXM36, NXM, NTM, NXW, NTW

Suitable for NXCOL, NXCW

Made of AISI 316L electropolished stainless steel

Load rating: 45kg (99lb)

Unit weight: 2.5kg (5.5lb)



NXWBS1

NXWBL WALL BRACKET FOR NXL HOUSING

Bracket for NXL

Suitable for NXCOL, NXCW

Made of AISI 316L electropolished stainless steel

Load rating: 45kg (99lb)

Length: 596mm (23.5in)

Unit weight: 5.5kg (12.1lb)



NXWBL

NXWBPTH1 WALL BRACKET FOR NXPTH

Bracket for NXPTH

Suitable for NXCOL, NXCW, NXFWBT

Made of AISI 316L electropolished stainless steel

Load rating: 70kg (154lb)

Length: 596mm (23.5in)

Unit weight: 4.8kg (10.6lb)



NXWBPTH1

NXFWBT EXTENSION BRACKET FOR PARAPET MOUNTING

Suitable for NXWBPTH1

Made of AISI 316L electropolished stainless steel

Load rating: 70kg (154lb)

Height: 124mm (4.9in)

Unit weight: 0.9kg



NXFWBT

NXCOL POLE MOUNT ADAPTOR

Suitable for NXWBS1, NXWBL, NXWBPTH1

Made of AISI 316L electropolished stainless steel

For pole diameters 110-150mm (4.3-5.9in)

Load rating: 50kg (110lb)

Unit weight: 3.3kg (7.3lb)



NXCOL

NXCW CORNER MOUNT ADAPTOR

Suitable for NXWBS1, NXWBL, NXWBPTH1

Made of AISI 316L electropolished stainless steel

Load rating: 50kg (110lb)

Unit weight: 1.2kg (2.6lb)



NXCW

PACKAGE

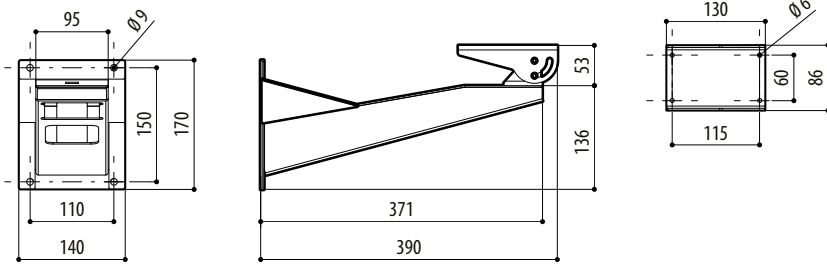
Model Number	Weight	Dimensions (WxHxL)	Master carton
NXWBS1	2.8kg (6.2lb)	16x18.5x46cm (6.3x7.3x18.1in)	8
NXWBL	5.6kg	19x16x60cm (7.5x6.3x23.6in)	-
NXWBPTH1	5kg/11lb	18x60x15.5cm (7.1x23.6x6.1in)	4
NXFWBT	1kg (2.2lb)	10x16x23cm (4x6x9in)	-
NXCOL	3.5kg (7.7lb)	14x25.5x20cm (5.5x10x7.9in)	8
NXCW	1.3kg (2.8lb)	24x32x24.5cm (9.4x12.6x9.6in)	5

COMPATIBILITY HOUSINGS/P&T/ADAPTERS/BRACKETS

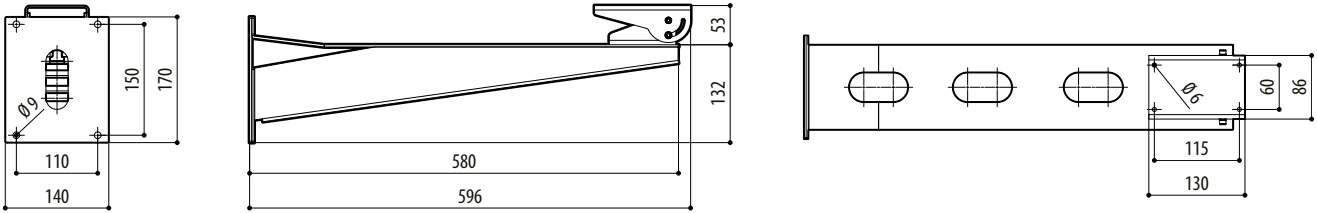
	Wall			Parapet
	NXWBS1	NXWBL	NXWBPTH1	NXFWBT
Housings				
NXM	✓	-	-	-
NTM	✓	-	-	-
NXL	-	✓	-	-
NTL	-	✓	-	-
NXW	✓	-	-	-
NTW	✓	-	-	-
P&T motors				
NXPTH	-	-	✓	✓
Adapters				
NXCW	✓	✓	✓	-
NXCOL	✓	✓	✓	-

TECHNICAL DRAWINGS

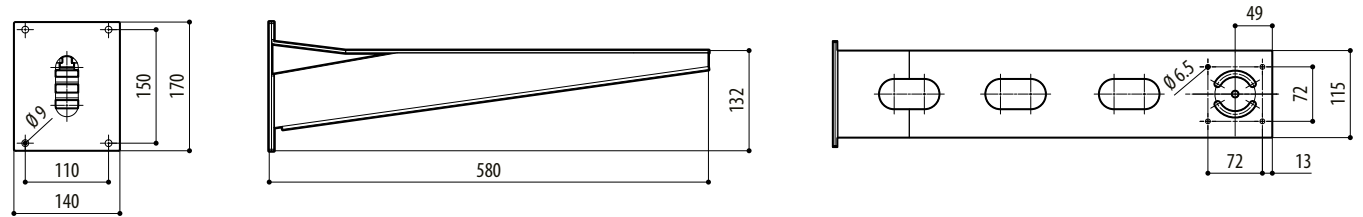
Sizes in millimeters.



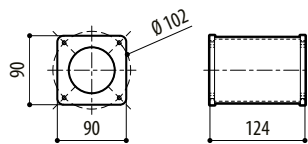
NXWBS1



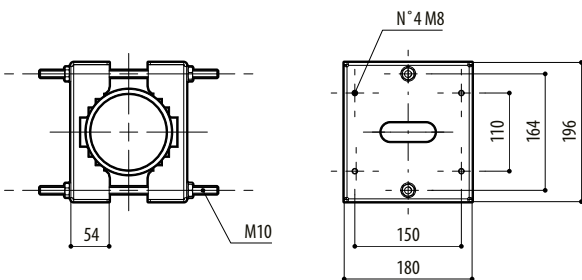
NXWBL



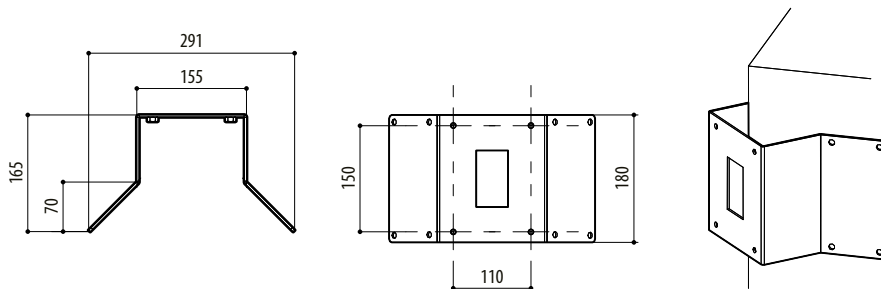
NXWBPTH1



NXFWBT



NXCOL



NXCW