

MAXPRO® NVR PE (Professional Edition)

32/64-Channel Enterprise Network Video Recorder (NVR)

Honeywell's MAXPRO NVR PE is an open, flexible and scalable Enterprise IP video surveillance system. Utilizing Honeywell's high definition cameras, MAXPRO NVR PE is a powerful, high definition IP recording system with support for standards, remote viewing clients for enterprise installations.

Open – Broad Device Integrations

- Integrates to full line of Honeywell IP cameras and HVE encoders
- Support for ONVIF Profile S, PSIA, real time streaming protocol (RTSP) standards
- Native device integrations including 360° camera support

Easy to Install and Use - Turnkey Solution

- Pre-installed with all required software and pre-licensed for 32 or 64 channels with no extra channel license costs
- Easy 3-Click* wizard to live video for auto configuration - quick and efficient IP system install
- Simple and logical configuration pages make setup a breeze even for the novice installer
- Supports simultaneous recording, live monitoring, search and system management for up to 64 IP cameras including high definition formats with easy to use clients
- Easy to use desktop clients, web client and mobile apps
- Learn One, Know them All - Common feature-rich user experience across the MAXPRO NVR Family and MAXPRO VMS / Viewer provides familiarity across a broad range of Honeywell products saving training costs

*With default settings and in a local area network for specific models

Scalable Integrated Security Solution

- Multiple MAXPRO NVRs deployed for system expansion using a distributed architecture and integrated with the MAXPRO Viewer multi-site software or MAXPRO VMS enterprise video management system
- Integration with Honeywell WIN-PAK® and Pro-Watch® Access Control Systems providing an integrated Access Control, Intrusion and Video solution



MAXPRO NVR PE
Rev B Server

HD



Enterprise class NVR Hardware

- Provides the processor and RAID enclosure in one chassis, resulting in both space and cost savings
- RAID 5 and 6 support for video storage is available through a hardware-based RAID controller, removes the loading on the processor that software RAID can bring
- Convenient web browser interface to manage the RAID controller
- Rack mountable with dual redundant power supplies and mirrored 2.5" operating and application solid state drives (SSDs) for high availability
- 8 removable storage drives with more reliable and robust SAS hard drives used for video storage
- Dual 1 GB NICs are optimized to separate record and viewing data to ensure 100% recording and smooth playback even with multiple client connections

MARKET OPPORTUNITIES

The continual growth of IP networks and the demand for high definition video have led to the need for convergence of building security systems and IT systems for many companies across the globe. This has resulted in a strong demand for an all-IP end-to-end enterprise security system deployment. MAXPRO NVR PE provides an open, flexible and scalable system with operational power to address the needs of a wide variety of enterprise applications. The 2U rack mount small form factor, high performance, and reliability of the MAXPRO NVR PE unit makes it an ideal solution in installations where digital video is mission critical.

MAXPRO® NVR PE (Professional Edition)

32/64-Channel Enterprise Network Video Recorder (NVR)

FEATURES

Software

Multi-Platform Support

- Allows local or remote operations including live and recorded video monitoring, configuration and system management in a single desktop client interface.
- Support for Web Client on Windows PC (Internet Explorer, Chrome and Firefox browsers) and Mac (Safari browser). Supports live, playback/search of recorded video for up to 1080p resolution on all cameras, taking snapshots and viewing presets for PTZ cameras.
- Support for mobile monitoring clients on iOS and Android Phones and Tablets with MAXPRO NVR apps: Login securely with https communication, Create favorite salvos (cameras up to 3x3 on tablets and 2x4 on phones per salvo), View Live and Recorded Video, Perform PTZ control through Presets and Monitor & Manage Alarms

Enhanced Monitoring with Desktop clients

- Multi-zoom views on HD video and support for Profile cameras to create virtual cameras by digitally zooming into the field of view. Example: Zoom in on a cash register in one view of the HD camera while at the same time monitoring the cash operator in the zoom out view of the HD camera
- Ability to investigate events and alarms by simultaneously viewing alarm videos at various stages. For every alarm, users can view the video captured during pre-alarm, on-alarm, and post-alarm, and also view live video from the camera which triggered the alarm.
- Enriched video viewing experience through the intuitive video rendering engine that optimizes CPU utilization by altering the video frame rate
- Cost-effective enhanced HD video rendering on remote desktop clients with support for monitoring of up to 18 1080p HD cameras in real time (25 fps)/540 fps 1080p HD with no-time lapse using the GPU capabilities of in-built processor graphics with 4th generation Intel® Core™ Processors for client systems. Up to 4 1080p HD @ 25 fps/120 fps on local client
- Video Surround feature simplifies the process of tracking subjects through a set of surrounding cameras
- Create, save and name salvos under My Salvos or Shared Salvos. Support for aspect ratio - 16:9, 4:3 and Stretched for video salvos
- IP PTZ control and digital zoom on fixed cameras. 360° immersive viewing experience providing heightened situational awareness and increased video surveillance coverage
- Support for auto switching of streams utilized by the client and flexibility to manually override the stream required with multi-stream cameras

React Fast and Protect your Assets

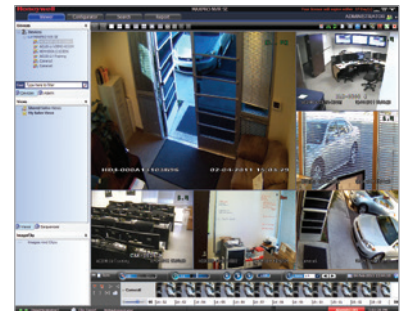
- Fast search by date/time, enhanced time line, time jump, bookmarks, SMART Motion search, calendar, preview, film strip view and events. Increase productivity with more efficient search/investigation: Get to the relevant video in few clicks without having to review hours of recordings.
- SMART Motion search – Fast and efficient forensic search and investigation for objects/motion on recorded video using Honeywell SMART motion detection Analytics algorithms on the Client PC without impacting the NVR Server load
- Capture and export clips and still images in simple .wmv, .asf, .mpvc and .bmp formats. Clips (.wmv) signed with digital signature for authentication.
- MAXPRO Video Container (.mpvc) format support - only playable in MAXPRO desktop clients and standalone Clip Player, quicker exports of raw video and support for estimating clip size and split to multiple clips to ensure clip storage media matches, include clip player with exported clip for easier review of video evidence and efficient investigation
- Clip Player - Portable standard secure player for archived and exported clips (*.mpvc), 360 camera de-warping and 2x2 Salvo support, Smooth playback support with up to 256x review speed, No software installation required to run on a Windows PC, option to include with clip export
- Email notification on camera, system and operator events.

Enhanced Recording Engine

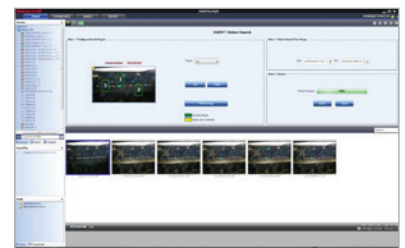
- Separate event video, continuous recording and archived video retention times
- Flexible Motion detection (VMD) options with Server (SMART VMD) or Camera based motion events support. Reduced false alarms with object based motion detection analytics with SMART VMD
- Video Archival - Archive large amounts of recorded Video data for long term storage either scheduled or manually, review through NVR desktop client or standalone Clip Player
- Multi-stream support - Support multiple streams from camera for varying resolutions and frame rates for live, recording, low bandwidth desktop clients, web clients and mobile apps
- Single channel license* for Encoders and Multi-imager 360 cameras (* - Max system capacity of 64 channels)

More Great Software Features

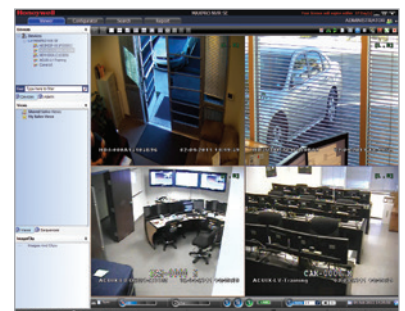
- Easy to use and enhanced camera configuration & discovery workflow - Reduce over configuration using NVR System Load and Storage Calculator and ensure the system is configured to meet requirements for retention and reliability
- Status Monitor - Save operational costs with an integrated Dashboard to easily monitor the health and recording status of all the MAXPRO NVRs from any workstation or PC in the network
- Role-based operator privileges supporting Windows and local users.
- Advanced security features with encryption support for communication between desktop client to NVR and secure https login for Web Client and Mobile apps
- Keyboard control with UltraKey Plus and UltraKey Lite over Ethernet
- Event history and operator log reporting with export in .pdf, Crystal Reports, Excel or Word
- Local and multi-language support



6 Split



SMART Motion Search



Quad

MAXPRO® NVR PE (Professional Edition)

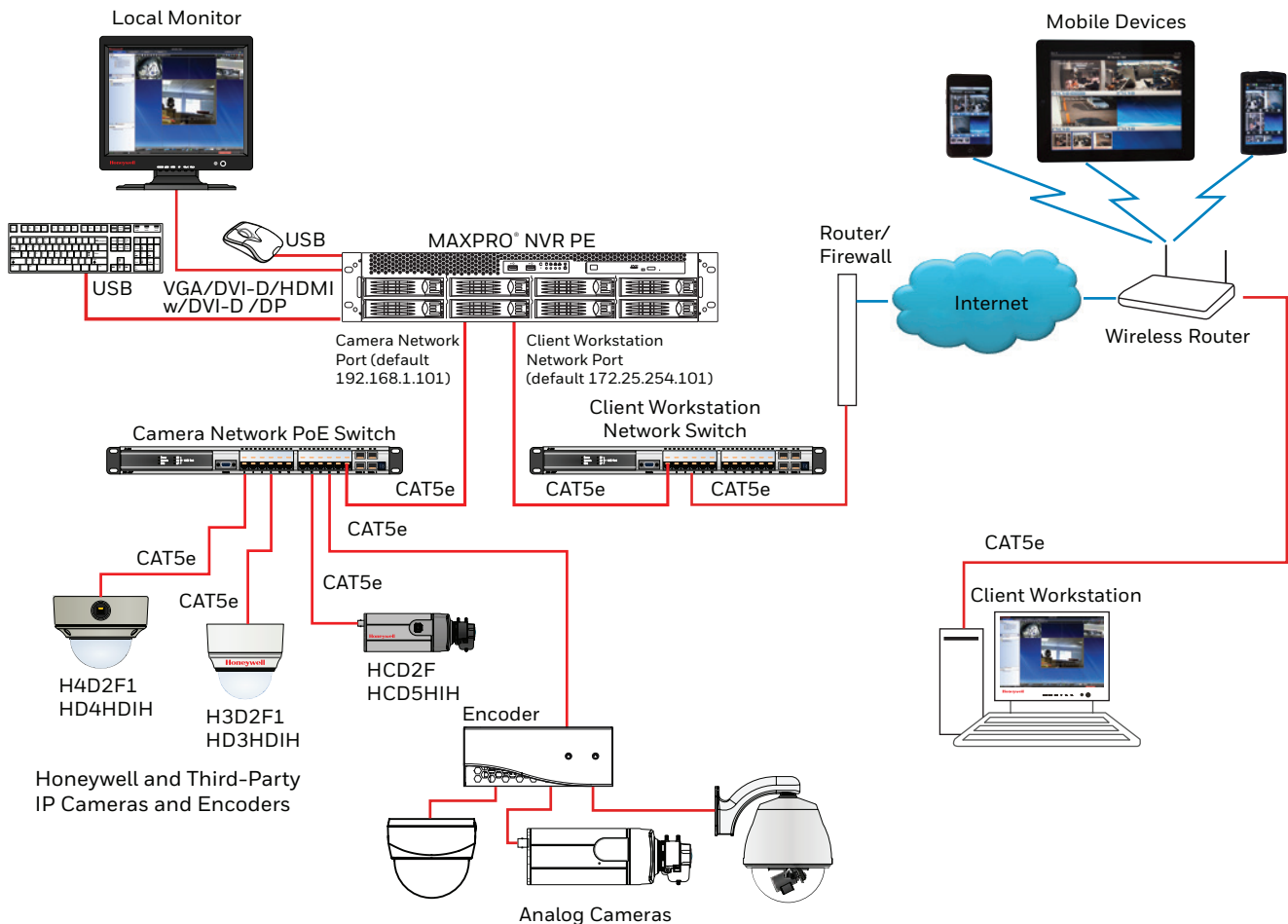
32/64-Channel Enterprise Network Video Recorder (NVR)

FEATURES

Hardware

- Record and monitor up to 64 channels at 1920 fps @ 4CIF/VGA or 1920 fps @ 720p HD or 1920 fps @ 1080p (4 Mbps bitrate) HD per MAXPRO NVR PE. Network bandwidth/throughput supported per NVR with Incoming: 256 Mbps, Outgoing: 425 Mbps; Total: 681 Mbps.
- Archival support of 25 channels @ 4 Mbps bitrate each / 100 Mbps total archival throughput capacity per MAXPRO NVR PE, with outgoing archival storage throughput of 275 Mbps
- Multi-stream support with maximum 128 streams per MAXPRO NVR PE. Support for configuring 1 preferred stream for continuous recording and 1 preferred stream for live video / motion based recording per camera
- Supports One-Way Audio (for specific IP cameras) with live, playback and clip export on desktop clients for up to 64 IP channels.
- Includes dual 1 GB NICs optimized to separate record and viewing data to ensure 100% recording and smooth playback even with multiple client connections.
- Redundant power supplies and separate RAID 1 Operating System 2.5" solid state drives (SSDs) from storage drives.
- 8 x RAID 5/6 removable storage drives
- Reliable and robust SAS hard drive options (1 TB, 3 TB, 4 TB, 6 TB hard drives) providing raw storage capacities up to 48 TB.
- Includes HDMI w/ DVI-D to HDMI adapter or VGA or DVI-D or Display port for single monitor support for local client and rendering performance using GPU of up to 4 1080p HD @ 25 fps/120 fps on local client
- 2U rack mount form factor with optional locking front bezel. Rack rails included for use with four post racking systems.

SYSTEM DIAGRAM



MAXPRO® NVR PE (Professional Edition)

32/64-Channel Enterprise Network Video Recorder (NVR)

SPECIFICATIONS

OPERATIONAL		OPERATIONAL	
MAXPRO NVR SOFTWARE - VERSION 4.0 OR ABOVE		MAXPRO NVR PE HARDWARE	
DATABASE	Microsoft® SQL Server® 2012 Express	PROCESSOR	Intel® Core™ i7-4790, 3.6 GHz, Intel® HD Graphics 4600
OPERATING SYSTEM	Windows Embedded Standard 7 SP1, 64-bit	MEMORY	8 GB
IMAGE COMPRESSIONS SUPPORTED	MJPEG, MPEG-4, H.264	POWER SUPPLY	Dual Redundant 820 W
SUPPORTED HONEYWELL IP CAMERAS AND ENCODERS	Supports Performance Series IP, eQulP® Series cameras. Refer to www.security.honeywell.com/hota/compatibility/index.html	OS HARD DRIVE	2x 2.5" 128 GB SSD, RAID1
SUPPORTED THIRD PARTY IP CAMERAS AND ENCODERS	Refer to the MAXPRO® NVR Compatibility for a comprehensive list of compatible products to which this device is integrated. www.security.honeywell.com/hota/compatibility/index.html	STORAGE CAPACITIES	4 TB to 48 TB raw storage
AUDIO SUPPORT	1-way audio for specific IP camera models. Refer to www.security.honeywell.com/hota/compatibility/index.html	STORAGE HARD DRIVE OPTIONS	8 field upgradable 1 TB or 2 TB or 3 TB or 4TB or 6TB SAS hard drive options
MAXIMUM NUMBER OF DESKTOP CLIENT CONNECTIONS	Desktop Client - 38 per unit from 19 remote workstations + 1 local on NVR	OPTICAL	22x DVD-RW
SALVO LAYOUTS	Desktop Client - Full, 2x2, 1x5, 3x3, 2x8, 1x12, 4x4. Web Client - 2x2, 1x1, 1x2, 1x3. Mobile app (Phone) - 2x2, 2x4, 1x2, 1x1. Mobile app (Tablet) - 3x3, 2x2, 1x1.	NETWORK	Dual 1 Gigabit Ethernet
PICTURE CONTROLS PER CAMERA	Sharpness, blur, brightness, contrast, hue, saturation, maintain aspect ratio, stretched, original size and picture mirror	CHASSIS WITH LOCKING BEZEL	2U 8 bay including rack mount kit
OSD	Concealed text option	RAID CARD	6 GB/s SAS/SATA RAID Card, PCI Express x8, supports RAID levels up to 6+0
PLAYBACK CONTROLS PER CAMERA - DESKTOP CLIENT	FWD/REV Play x (1, 2, 4, 8, 16) Slow FWD/REV Play x (1/2, 1/4, 1/8)	REAR PANEL CONNECTIONS	
SEARCH TYPES	Time/date timeline, time jump FWD/REV, bookmarks, calendar, preview, film strip, event search and SMART Motion Search	MOUSE AND KEYBOARD	2x USB
RECORDING SCHEDULE	Constant and event based with H/M/D and holiday and exception days	USB	2x Front, 4x Back
RECORDING METHODS PER CAMERA	Constant, event based and user activated	NETWORK	2x RJ45
LIVE SETTINGS PER CAMERA	Compression format, resolution and frame rate	MONITOR OUTPUT	HDMI cw DVI-D to HDMI adapter or VGA or DVI-D or Display port
RECORD SETTINGS PER CAMERA	Same as live or reduced frame rate	ELECTRICAL	
CLIP FORMAT	Honeywell MPVC playable with standalone MAXPRO Clip Player for faster and secure exports. WMV with digital certificate for authentication playable with Windows media player. ASF for faster exporting of longer than an hour backup clips in native compression format.	INPUT VOLTAGE	110/220 VAC 50/60 Hz
VIDEO CLIP AUTHENTICATION	Digital signature, verification tool provided	OPERATING VOLTAGE	110V/220V Auto Sensing
MOTION DETECTION LOCATION	Camera based for supported models or Server based (SMART VMD) for all models (except 360 fisheye /panomorph views)	POWER DISSIPATION	Average BTU rating = 880 BTU/HR Peak BTU rating = 2800 BTU/HR
EVENT RECORDING	Pre and post duration setting	MECHANICAL	
OPERATOR REPORTING	Per user, configurator, session and viewer	CONSTRUCTION	Chassis: Black matte paint
EVENT REPORT	Per camera or recorder events	DIMENSIONS (W X H X D)	430 mm x 88.8 mm x 660 mm
OPERATORS	1024	WEIGHT	Shipping: 29.5kg
RECORDING AND MONITORING PERFORMANCE		ENVIRONMENTAL	
1920 fps @ 4CIF/VGA or 1920 fps @ 720p HD or 1920 fps @ 1080p (4 Mbps bitrate) HD. 1-way audio for up to 64 IP channels. Network bandwidth/throughput - Incoming: 256 Mbps, Outgoing: 425 Mbps, Total: 681 Mbps. Rendering performance using GPU of up to 4 1080p HD @ 25 fps/120 fps on local client. Note: Onecam Grandeye 360 Cameras are not supported with GPU rendering and use CPU rendering by default.		TEMPERATURE OPERATING	0°C to 35°C
MAX VIDEO STREAMS SUPPORT		RELATIVE HUMIDITY	5-95% non-condensing
Web Client: Live - 64 streams, Playback - 32 streams. Note: Live streams consumed are per camera being viewed live and duplicate live views of the same camera in multiple or same web client instance are allowed without consuming additional streams. Playback streams consumed are per playback stream being viewed and each playback stream being viewed consumes 1 additional stream. Desktop Client: Live - 256 streams, Playback/Video retrieval sessions - 32, Sync playback - 9 streams. 256 live streams limit excludes 1 stream used per camera if SMART VMD is enabled. Maximum live streams per camera is 15 with SMART VMD enabled. Mobile App: 16 streams of 1080p HD @ 5 fps each. Note: During archival operations, maximum no of playback streams recommended from Desktop Client and Web Client is 16 streams.		REGULATORY	
SERVER BASED VMD (SMART VMD) PERFORMANCE - CHANNELS SUPPORTED		EMISSIONS	FCC part 15B Class A; EN 55022 class A
Channels at max fps: 64 ch at 1920 fps @ 4CIF/VGA or 64 ch at 1920 fps @ 720p or 64 ch at 1920 fps @ 1080p or total 128 Megapixel. All Channels at fps: 64 ch at 1920 fps @ 4CIF/VGA or 1920 fps @ 720p or 1920 fps @ 1080p or total 128 Megapixel.		IMMUNITY	EN 50130-4
ARCHIVAL PERFORMANCE		SAFETY	ANSI / UL 60950-1; CAN/CSA C22.2 No 60950-1; IEC 60950-1
25 channels @ 4 Mbps bitrate each / 100 Mbps total archival throughput capacity. Outgoing archival storage throughput of 275 Mbps.		ROHS	EN 50581
MULTI-STREAM PERFORMANCE		COUNTRY OF ORIGIN	Assembled in the USA
Support for maximum 128 streams. Support for configuring 1 preferred stream for continuous recording and 1 preferred stream for live video / motion based recording per camera.		WARRANTY	
		WARRANTY AND ADVANCED REPLACEMENTS	Refer to http://www.honeywellvideo.com/support/warranty/index.html

MAXPRO® NVR PE (Professional Edition)

32/64-Channel Enterprise Network Video Recorder (NVR)

SPECIFICATIONS

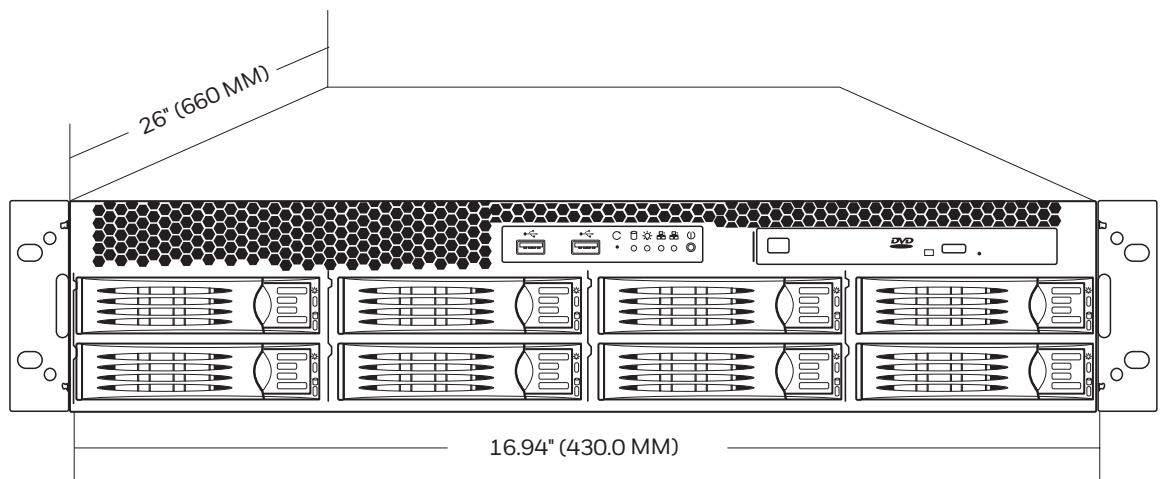
MAXPRO NVR DESKTOP CLIENT ONLY WORKSTATION – SPECIFICATIONS			
	With GPU Rendering Capability		Without GPU Rendering Capability
	Minimum	Recommended	Recommended
PERFORMANCE CONFIGURATION	Up to 13 1080p HD Cameras, 1 Monitor (390fps @1080p HD)	Up to 18 1080p HD cameras, 2 Monitors (540fps @1080p HD)	Up to 9 HD Cameras (1 selected panel only, Throttle Frame Rate setting enabled)
PROCESSOR*	Intel® Core™ i5-4460 or equivalent 4th generation Intel® Core™ Processors for client systems	Intel® Core™ i7-4790 or equivalent 4th generation Intel® Core™ Processors for client systems	Intel® Core™ 2 Duo Processor E6750 2.66 GHz or Quad Core Intel® Xeon® E5405 2.0 GHz
GRAPHICS ADAPTER	In-built Processor Graphics (GPU): Intel® HD Graphics 4600 or equivalent		512 MB or higher Display Card (Optional)
SYSTEM MEMORY (RAM)	8 GB		4 GB
OS & APPLICATION – HARD DISK DRIVE OR PARTITION	Minimum 100 GB Partition drive or separate hard drive		
NETWORK INTERFACE	Minimum – 1 Gigabit network interface card		
OPERATING SYSTEM	Microsoft® Windows 7 Professional SP1, Windows 8.1, Windows 10 (64bit)		Microsoft® Windows 7 Professional SP1, Windows 8.1, Windows 10 (64bit/32bit)
OPTICAL DRIVE	DVD-RW		
MONITOR RESOLUTION	Video resolution 1280x1024 pixels, 32 bit		
KEYBOARD/MOUSE	102-key keyboard and mouse		

NOTE: The performance specifications above are recommended for systems with fixed or PTZ cameras only. Oncam Grandeye 360 cameras are not supported with GPU rendering and use CPU rendering by default. On Windows 7 workstations, GPU rendering is only supported through the motherboard monitor outputs and any additional graphics cards should be disabled in BIOS. On Windows 8.1, Windows 10 workstations with Intel GPU and any additional graphics cards, atleast one monitor should be connected to the motherboard monitor output.

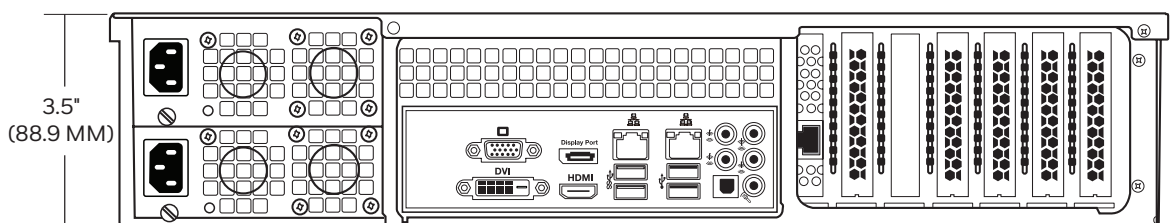
* - GPU rendering by NVR client is not currently supported on 6th Generation Intel® Core™ processors (Skylake processors) and CPU rendering should be used by uninstalling the GPU driver.

SPECIFICATIONS

Front View



Rear View

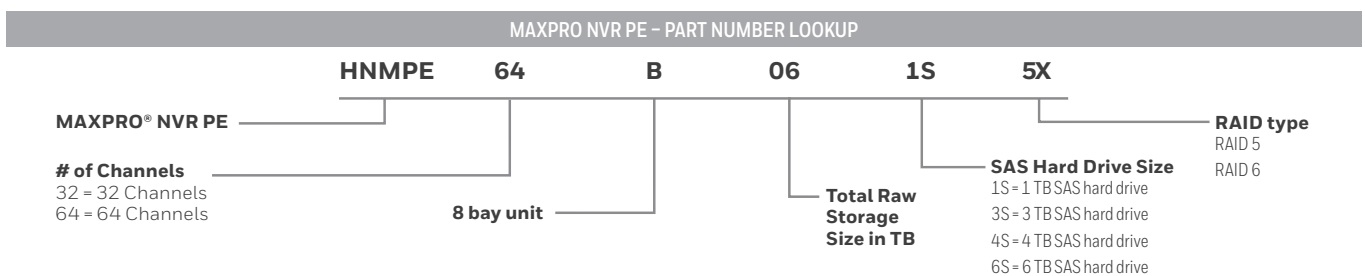


MAXPRO® NVR PE (Professional Edition)

32/64-Channel Enterprise Network Video Recorder (NVR)

ORDERING

MAXPRO NVR PE			MAXPRO NVR PE		
HNMPE32B061S5X	MAXPRO NVR PE, 32CH, 6X1T	SAS, 8D, RAID 5, EMEA 4.547 TB @ RAID 5	HNMPE64B183S6X	MAXPRO NVR PE, 64CH, 6X3T	SAS, 8D, RAID 6, EMEA 10.913 TB @ RAID 6
HNMPE32B123S5X	MAXPRO NVR PE, 32CH, 4X3T	SAS, 8D, RAID 5, EMEA 8.185 TB @ RAID 5	HNMPE64B324S6X	MAXPRO NVR PE, 64CH, 8X4T	SAS, 8D, RAID 6, EMEA 21.828 TB @ RAID 6
HNMPE32B183S5X	MAXPRO NVR PE, 32CH, 6X3T	SAS, 8D, RAID5, EMEA 13.642 TB @ RAID 5	HNMPE32B366S5X	MAXPRO NVR PE, 32CH, 6X6T	SAS, 8D, RAID 5, EMEA 28.61TB @ RAID 5
HNMPE32B324S5X	MAXPRO NVR PE, 32CH, 8X4T	SAS, 8D, RAID 5, EMEA 25.466 TB @ RAID 5	HNMPE32B486S5X	MAXPRO NVR PE, 32CH, 8X6T	SAS, 8D, RAID 5, EMEA 40.054 TB @RAID 5
HNMPE32B061S6X	MAXPRO NVR PE, 32CH, 6X1T	SAS, 8D, RAID 6, EMEA 3.638 TB @ RAID 6	HNMPE32B366S6X	MAXPRO NVR PE, 32CH, 6X6T	SAS, 8D, RAID 6, EMEA 22.888TB @ RAID 6
HNMPE32B123S6X	MAXPRO NVR PE, 32CH, 4X3T	SAS, 8D, RAID 6, EMEA 5.456 TB @ RAID 6	HNMPE32B486S6X	MAXPRO NVR PE, 32CH, 8X6T	SAS, 8D, RAID 6, EMEA 34.332 TB @ RAID6
HNMPE32B183S6X	MAXPRO NVR PE, 32CH, 6X3T	SAS, 8D, RAID 6, EMEA 10.913 TB @ RAID 6	HNMPE64B366S5X	MAXPRO NVR PE, 64CH, 6X6T	SAS, 8D, RAID 5, EMEA 28.61 TB @ RAID 5
HNMPE32B324S6X	MAXPRO NVR PE, 32CH, 8X4T	SAS, 8D, RAID 6, EMEA 21.828 TB @ RAID 6	HNMPE64B486S5X	MAXPRO NVR PE, 64CH, 8X6T	SAS, 8D, RAID 5, EMEA 40.054 TB @ RAID 5
HNMPE64B061S5X	MAXPRO NVR PE, 64CH, 6X1T	SAS, 8D, RAID 5, EMEA 4.547 TB @ RAID 5	HNMPE64B366S6X	MAXPRO NVR PE, 64CH, 6X6T	SAS, 8D, RAID 6, EMEA 22.888 TB @ RAID 6
HNMPE64B123S5X	MAXPRO NVR PE, 64CH, 4X3T	SAS, 8D, RAID 5, EMEA 8.185 TB @ RAID 5	HNMPE64B486S6X	MAXPRO NVR PE, 64CH, 8X6T	SAS, 8D, RAID 6, EMEA 34.332 TB @ RAID 6
HNMPE64B183S5X	MAXPRO NVR PE, 64CH, 6X3T	SAS, 8D, RAID5, EMEA 13.642 TB @ RAID 5	ACCESSORIES		
HNMPE64B324S5X	MAXPRO NVR PE, 64CH, 8X4T	SAS, 8D, RAID 5, EMEA 25.466 TB @ RAID 5	HNMPEBHD1S	1 TB SAS Upgrade Kit, MAXPRO NVR PE, Rev B Server	
HNMPE64B061S6X	MAXPRO NVR PE, 64CH, 6X1T	SAS, 8D, RAID 6, EMEA 3.638 TB @ RAID6	HNMPEBHD2S	2 TB SAS Upgrade Kit, MAXPRO NVR PE, Rev B Server	
HNMPE64B123S6X	MAXPRO NVR PE, 64CH, 4X3T	SAS, 8D, RAID 6, EMEA 5.456 TB @ RAID 6	HNMPEBHD3S	3 TB SAS Upgrade Kit, MAXPRO NVR PE, Rev B Server	
			HNMPEBHD4S	4 TB SAS Upgrade Kit, MAXPRO NVR PE, Rev B Server	
			HNMPEBHD6S	6 TB SAS Upgrade Kit, MAXPRO NVR PE, Rev B Server	
			HNMPEBBZL	Front Locking Bezel, MAXPRO NVR PE, Rev B Server	



For more information:

please visit www.honeywell.com/security/uk

Honeywell Security and Fire

Aston Fields Road
Whitehouse Industrial Estate
Runcorn
Cheshire
WA7 3DL
Tel: +44 (0)1928 754 028
www.honeywell.com

HVS-MPNPE-02-EN(0916)DS-E
September 2016
© 2016 Honeywell International Inc.

Honeywell